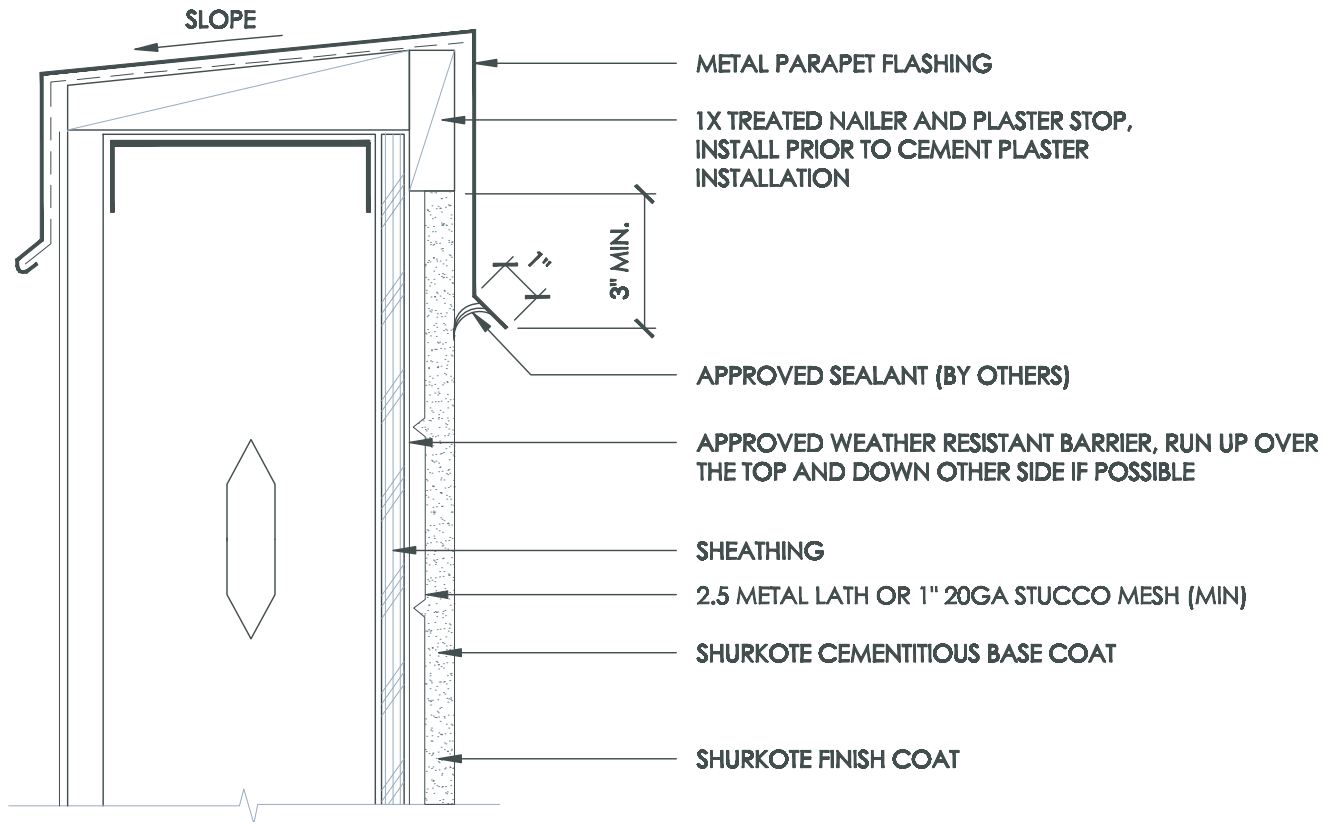


# Typical Metal Parapet Cap



HCS 3.2



**NOTE:**  
FOR ADDITIONAL PROTECTION, A SELF-SEALING MEMBRANE SHALL BE ADDED OVER PARAPET FRAMING AND EXTENDED DOWN OVER THE WATER RESISTANT BARRIER.

**NOTE:**  
FOR ADDITIONAL CAP FLASHING DETAILS REFER TO NRCA AND/OR SMACNA STANDARDS

September 2009



**UltraKote Products, Inc.**  
327 South 27th Avenue  
Phoenix, Arizona 85009  
Phone: 800.224.2344  
Fax: 602.272.6445  
[www.ultrakoteproducts.com](http://www.ultrakoteproducts.com)