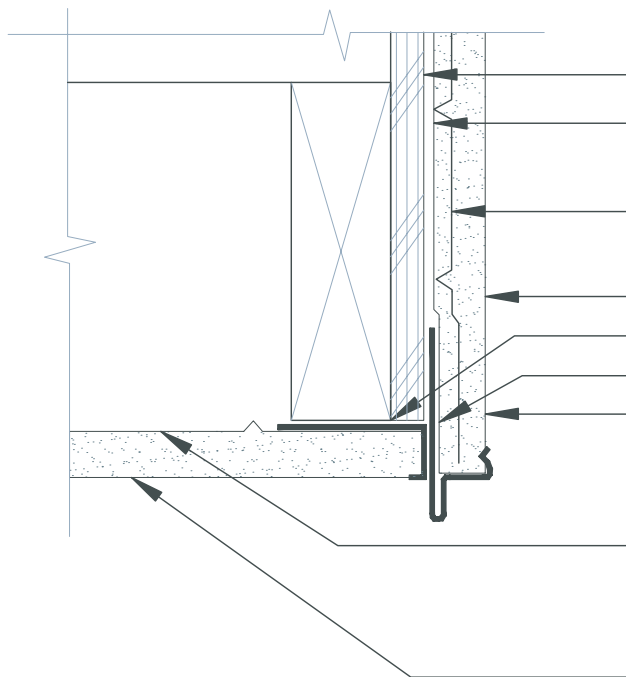


Typical Soffit Weep Screenshot



HCS 3.8



SHEATHING
APPROVED WEATHER RESISTANT BARRIER
LAPS OVER DRIP MOLD FLANGE
2.5 METAL LATH OR 1" 20GA
STUCCO MESH (MIN)
SHURKOTE CEMENTITIOUS BASE COAT
CASING BEAD
DRIP MOLD WITH WEEP HOLES
SHURKOTE FINISH COAT

$\frac{3}{8}$ " RIB LATH INSTALL DIRECTLY
AGAINST SOFFIT FRAMING 24"
O.C. WITH WEEP HOLES
SHURKOTE CEMENTITIOUS BASE COAT

NOTE:

FRAMING JOIST SPACED AT 24" REQUIRES $\frac{3}{8}$ " RIB LATH
PERPENDICULAR TO JOINTS. LATH RIBS SHALL BE NESTED.

September 2009



UltraKote Products, Inc.
327 South 27th Avenue
Phoenix, Arizona 85009
Phone: 800.224.2344
Fax: 602.272.6445
www.ultrakoteproducts.com