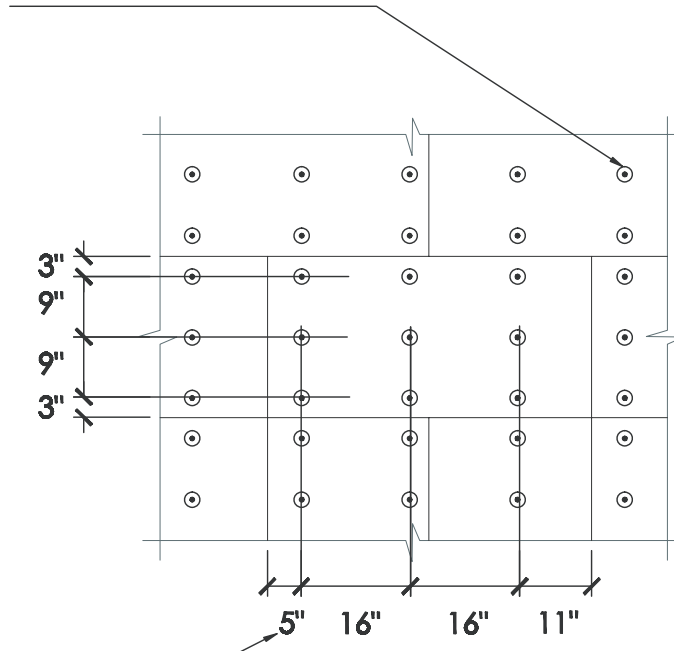


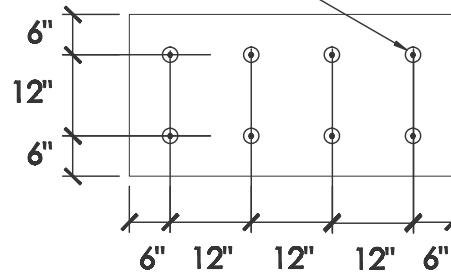
Typical Fastener Patters

MECHANICAL ATTACHMENT OF INSULATION BOARD TO WOOD OR STEEL STUDS SPACED MAXIMUM 16" O.C. SEE NOTE NO.1 BELOW.



SEE NOTE NO. 2 BELOW.

MECHANICAL ATTACHMENT OF INSULATION BOARD TO STRUCTURAL SUBSTRATES AND SCREWABLE SHEATHING. SEE NOTE NO.1 BELOW.



NOTE: 1. THE ABOVE FASTENER SPACING PATTERN SHALL BE PROVIDED AS A MINIMUM. FASTENER TYPE, SPACING AND DEPTH OF THE PENETRATION SHALL BE DETERMINED BY THE DESIGN PROFESSIONAL TO MEET SPECIFIC JOB REQUIREMENTS.

2. DISTANCE FROM FASTENER TO EDGE OF EPS IS VARIABLE, BUT SHALL NOT BE GREATER THAN 11" NOR LESS THAN 5".