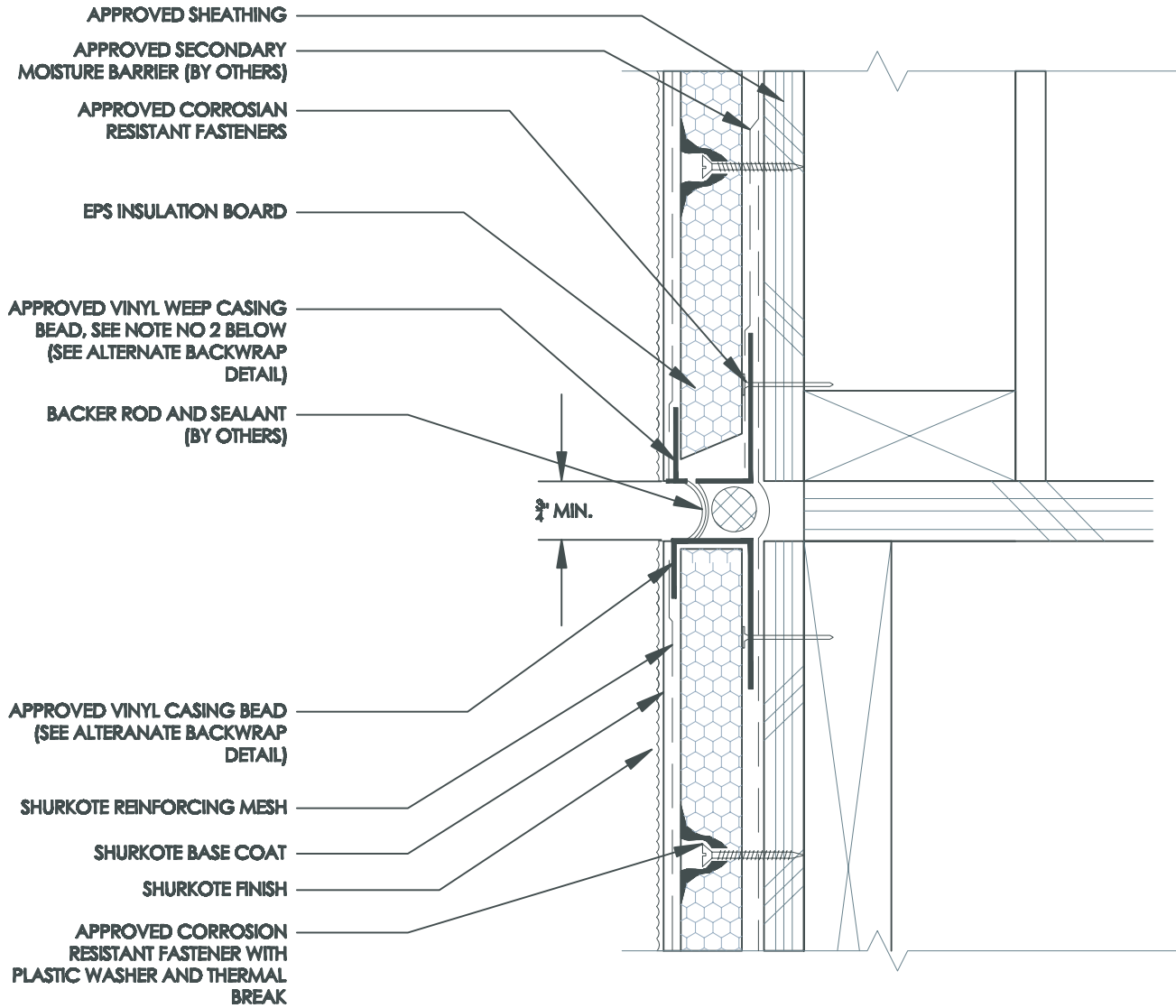


# Control Joint at Floor Line in Wood Frame Const.



WM 3.1



NOTE: MAINTAIN  $\frac{1}{8}$ " SPACE BETWEEN BEVELED INSULATION AND WEEP CASING BEAD.

September 2009



UltraKote Products, Inc.  
327 South 27th Avenue  
Phoenix, Arizona 85009  
Phone: 800.224.2344  
Fax: 602.272.6445  
www.ultrakoteproducts.com