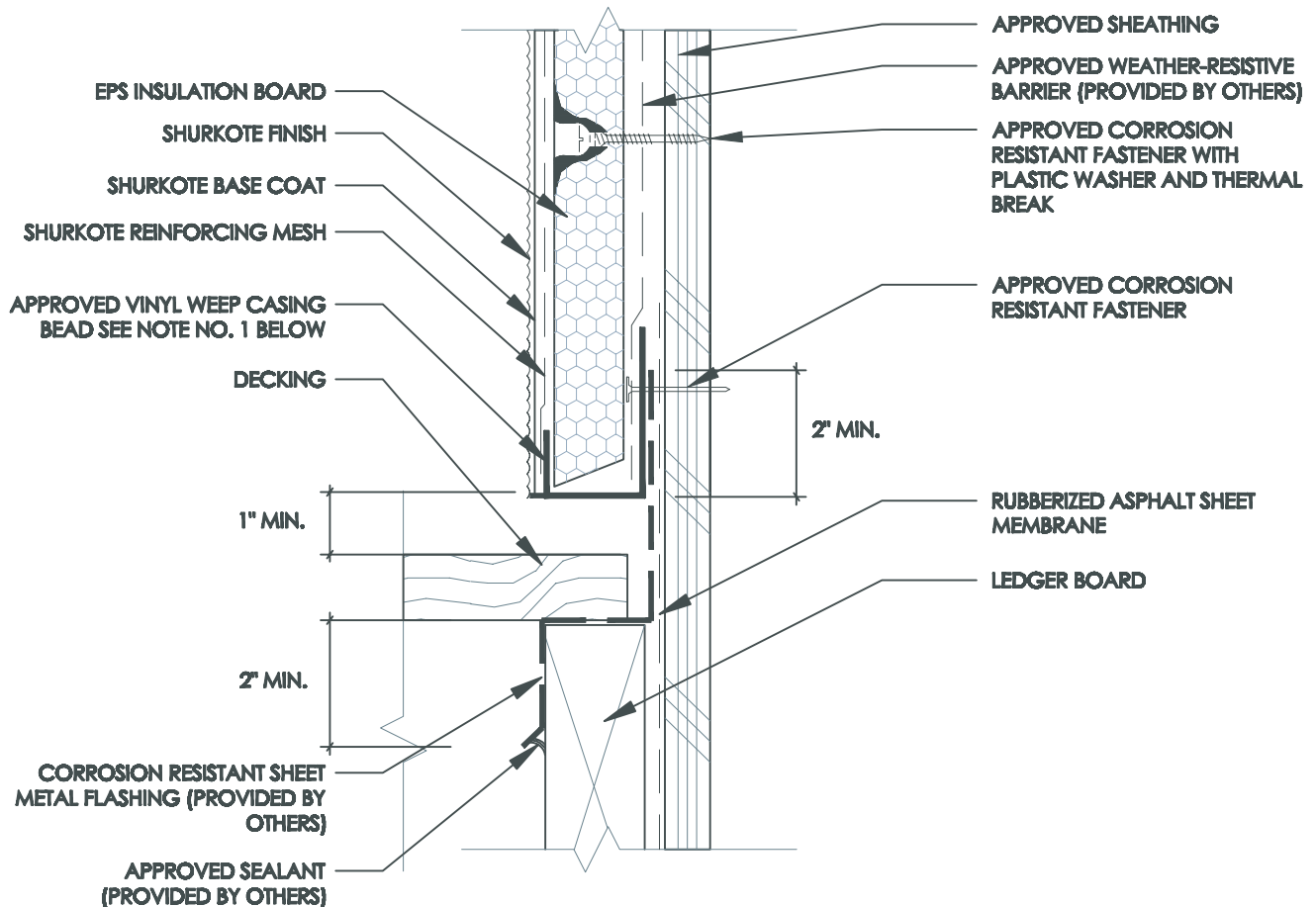


Typical Termination at Top of Balcony



NOTE: 1. MAINTAIN $\frac{1}{8}$ " SPACE BETWEEN BEVELED INSULATION AND WEEP CASING BEAD
2. ALL LAPS, SPLICES AND CORNERS IN METAL FLASHING SHALL BE MADE PERMANENTLY WATER TIGHT.

