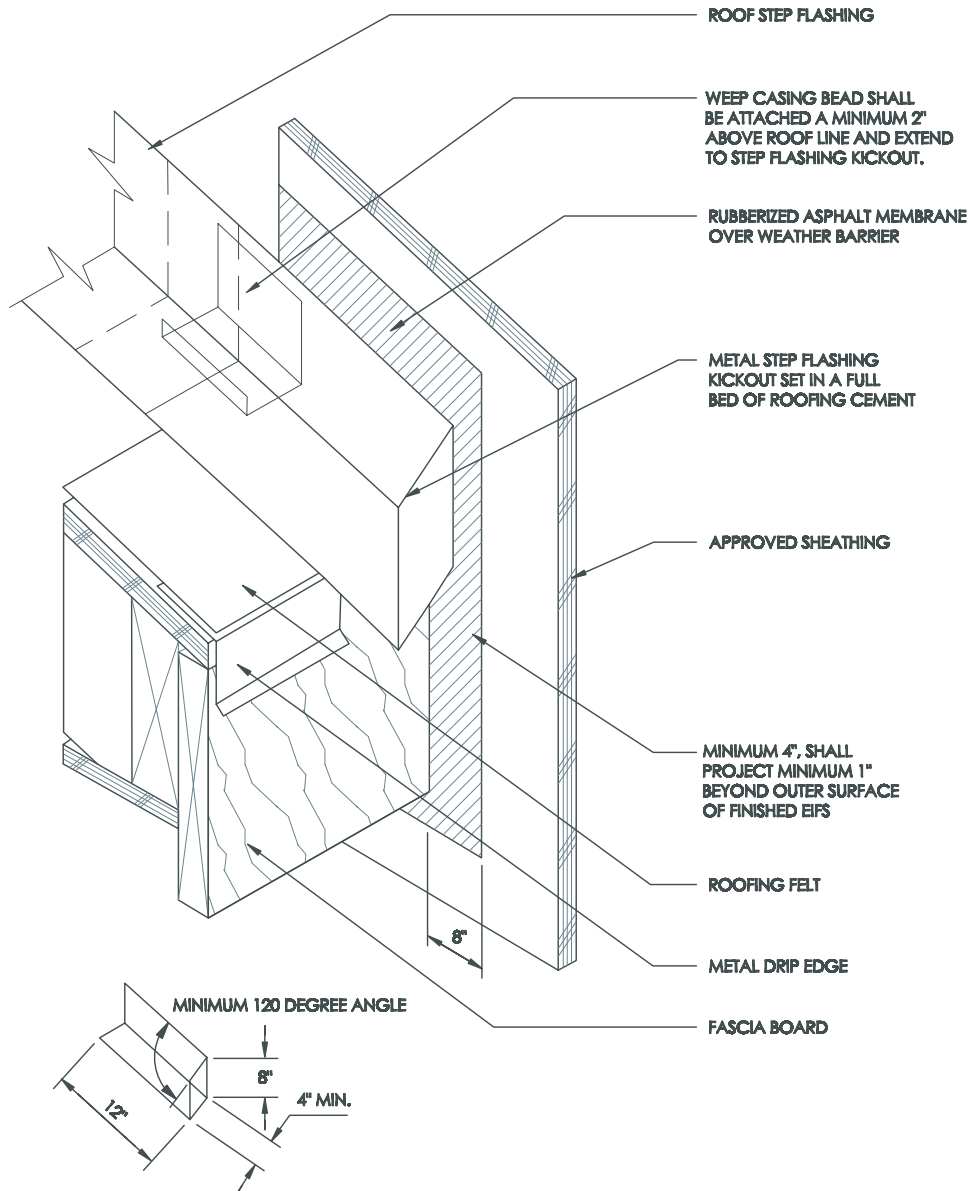


Kick Out Flashing at Roof/Wall Termination



WM 4.5



1. THE "KICK-OUT" DIVERTER FLASHING MUST BE INSTALLED PRIOR TO INSTALLING THE WATER MANAGED EIF SYSTEM.
2. DO NOT INSTALL THE GUTTER SYSTEM UNTIL THE WATER MANAGED EIF SYSTEM HAS BEEN COMPLETED.

September 2009



UltraKote Products, Inc.
327 South 27th Avenue
Phoenix, Arizona 85009
Phone: 800.224.2344
Fax: 602.272.6445
www.ultrakoteproducts.com