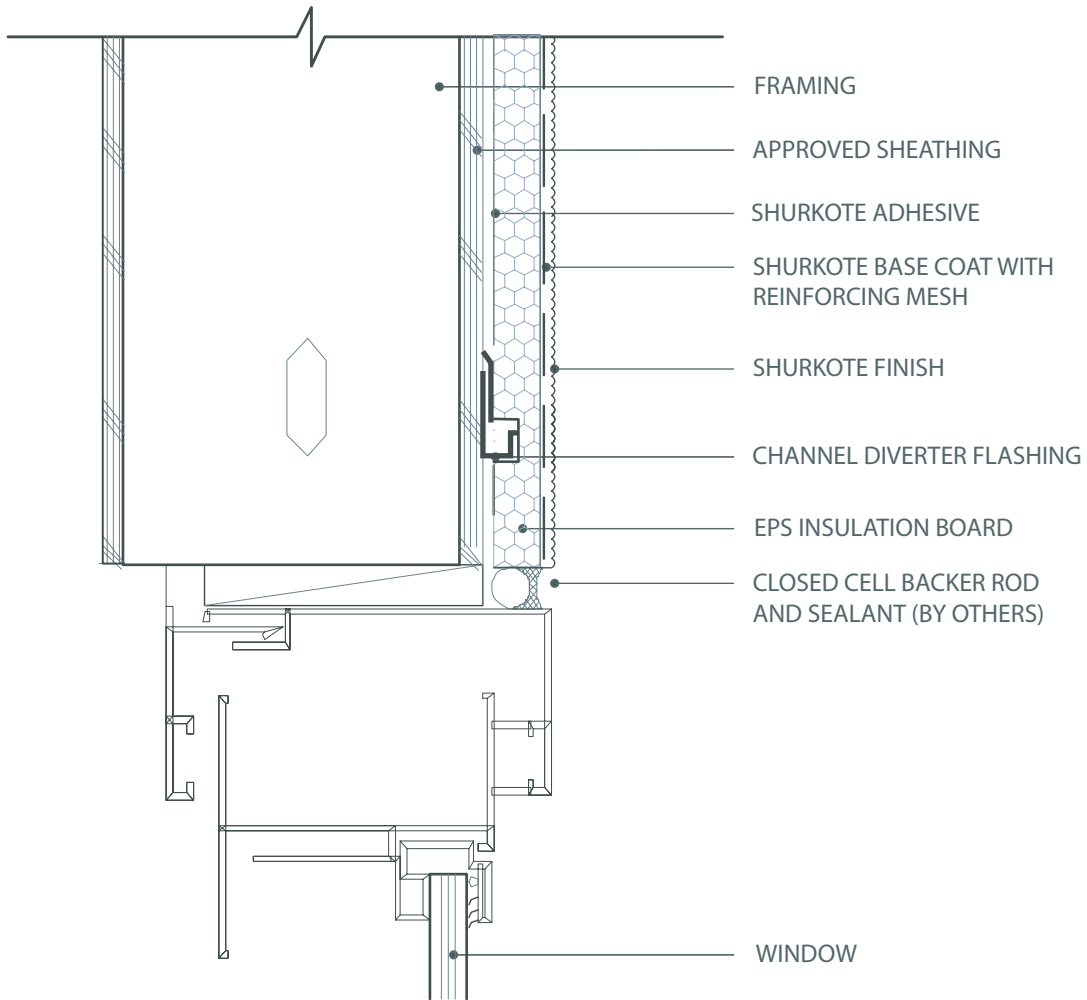


Embedded Channel Diverter Flashing



WM 4.7



NOTE: ENSURE THE DIVERTER FLASHING EXTENDS 6 INCHES BEYOND OPENING ON EITHER SIDE OF THE OPENING TO ALLOW POTENTIAL MOISTURE TO DRAIN DOWN THE WALL TO THE SIDE OF THE OPENING. MAINTAIN A MINIMUM OF 1/4" EPS INSULATION THICKNESS, ENSURE THE DIVERTER FLASHING HAS POSITIVE SLOPE TO PROVIDE A MEANS FOR DRAINAGE.

September 2009



UltraKote Products, Inc.
327 South 27th Avenue
Phoenix, Arizona 85009
Phone: 800.224.2344
Fax: 602.272.6445
www.ultrakoteproducts.com