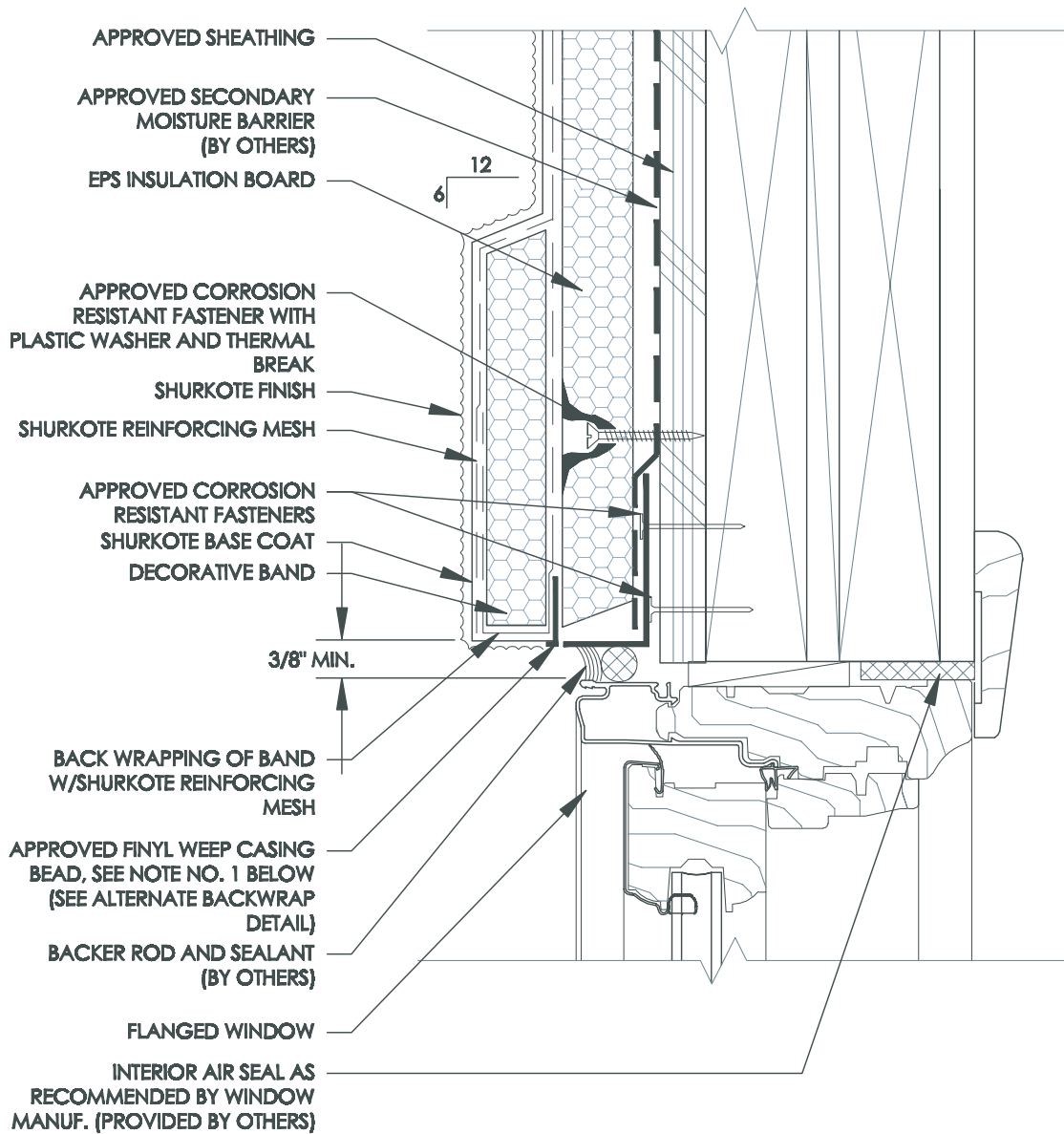


Typical Window Head - Flanged Window with Band



NOTE: 1. MAINTAIN $\frac{1}{8}$ " SPACE BETWEEN BEVELED INSULATION AND WEEP CASING BEAD
 2. AT HORIZONTAL WALL SURFACES, INCLUDING LEDGES, CAPS, SILLS, ETC., A MINIMUM SLOPE OF 6 INCHES IN 12 INCHES IS REQUIRED.

September 2009



UltraKote Products, Inc.
 327 South 27th Avenue
 Phoenix, Arizona 85009
 Phone: 800.224.2344
 Fax: 602.272.6445
 www.ultrakoteproducts.com