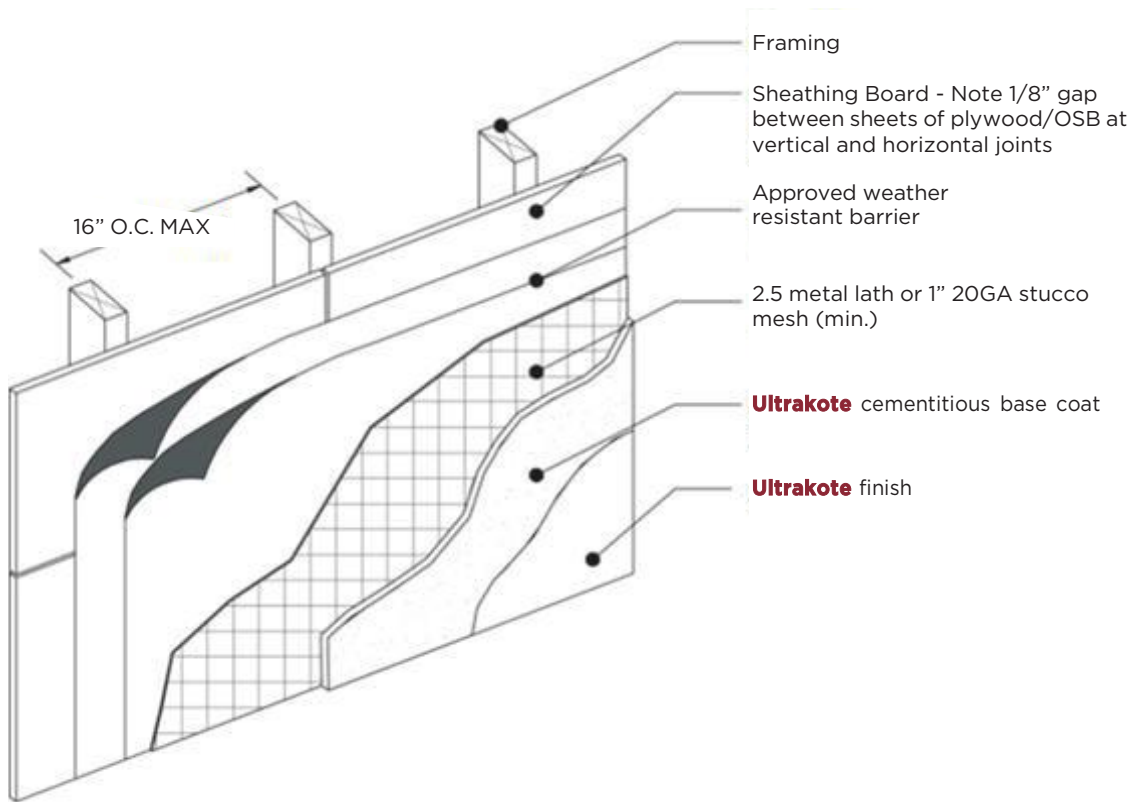


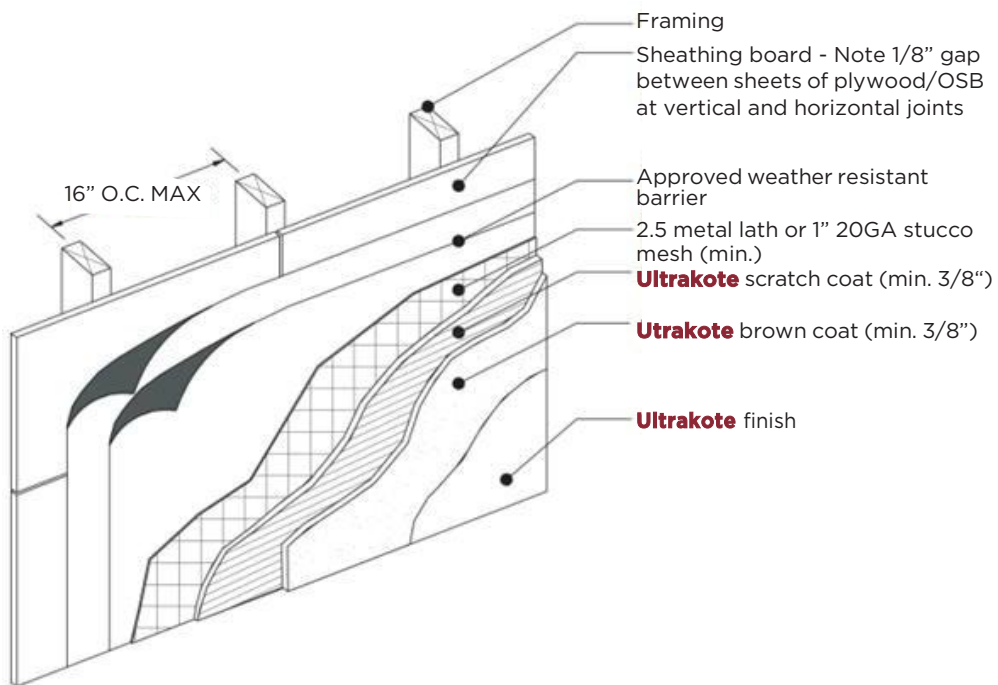
Typical One Coat Assembly

HCS 1.1



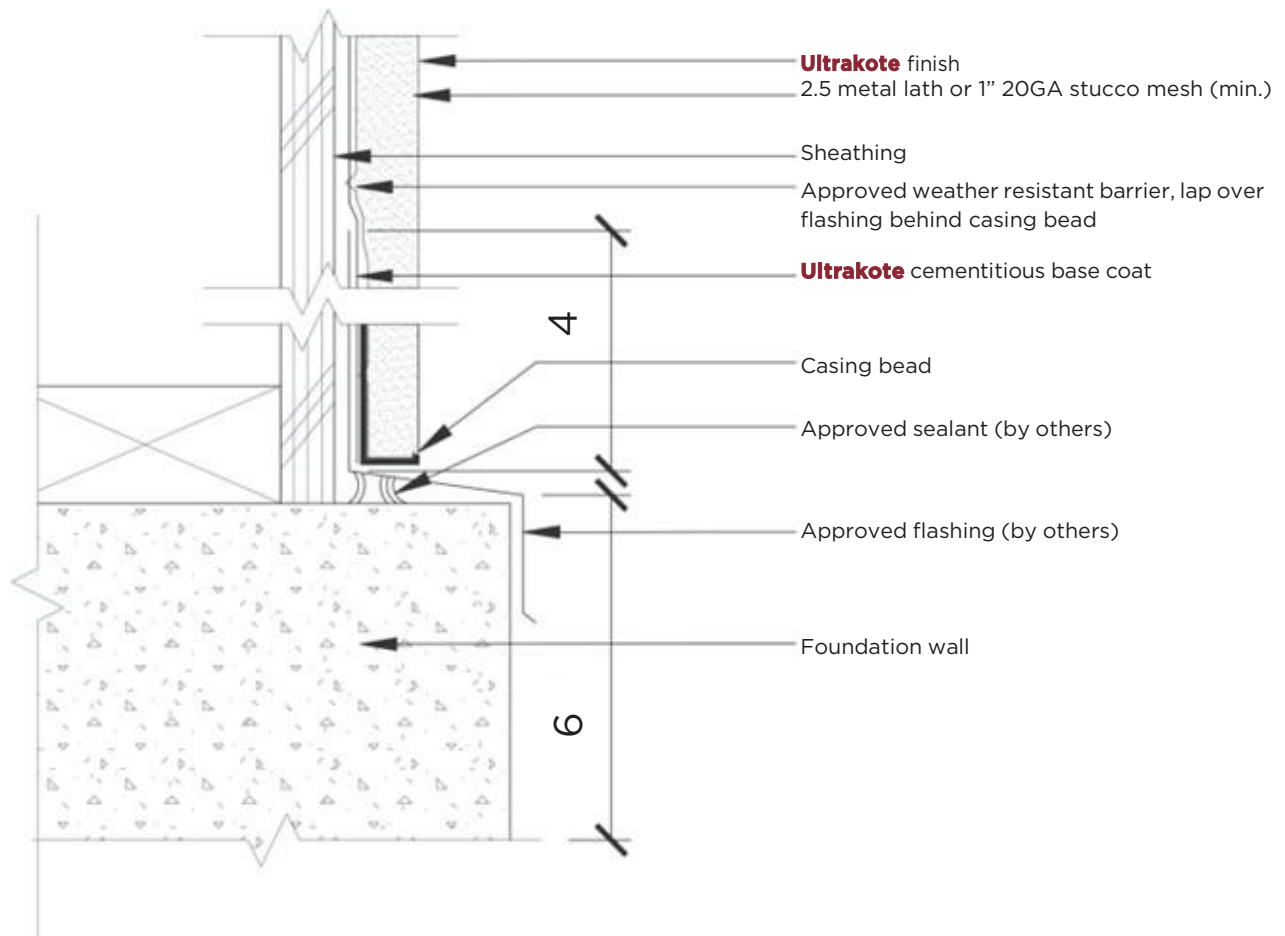
Typical Three Coat Assembly

HCS 1.2



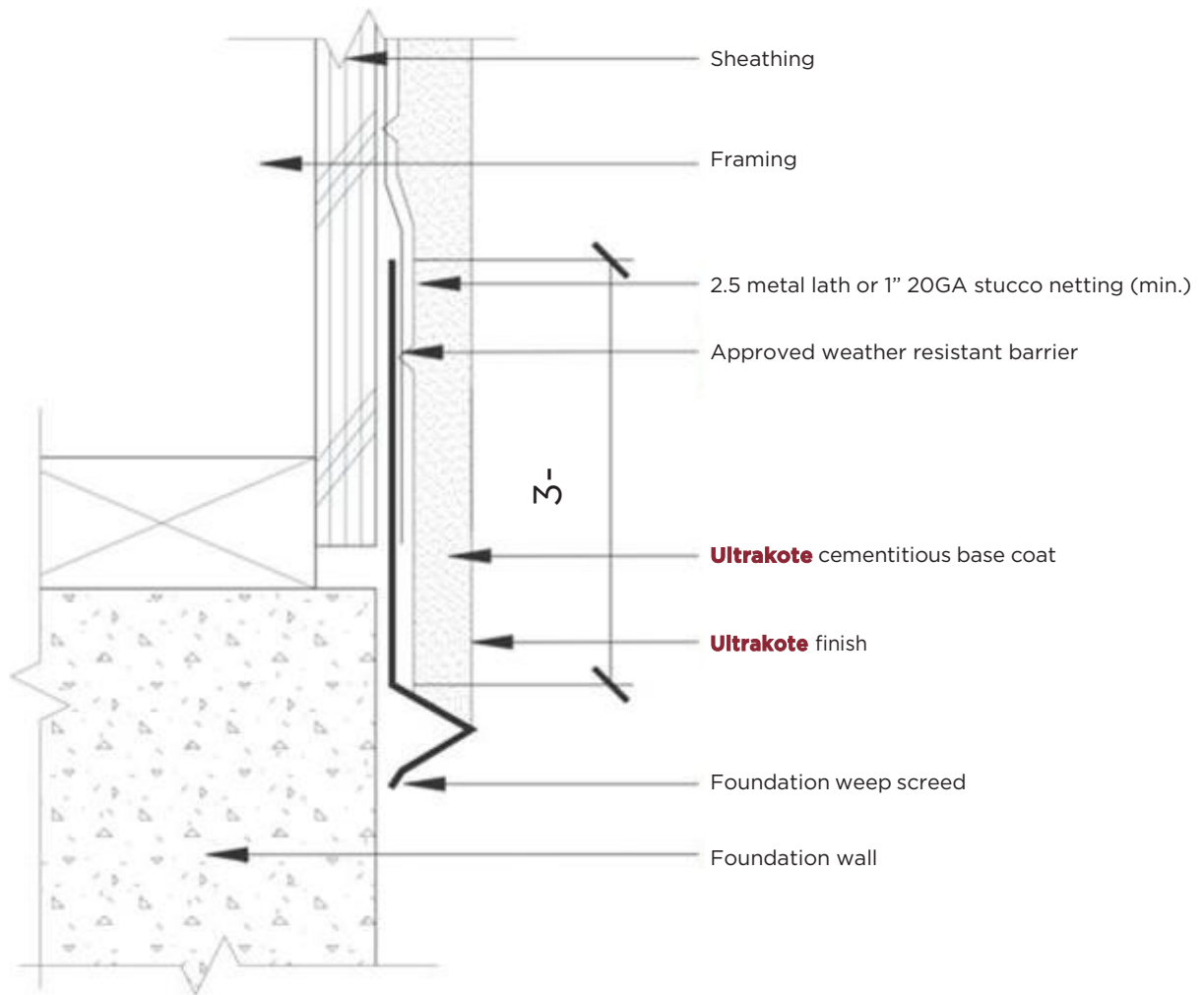
Typical Termination at Concrete Foundation

HCS 2.1



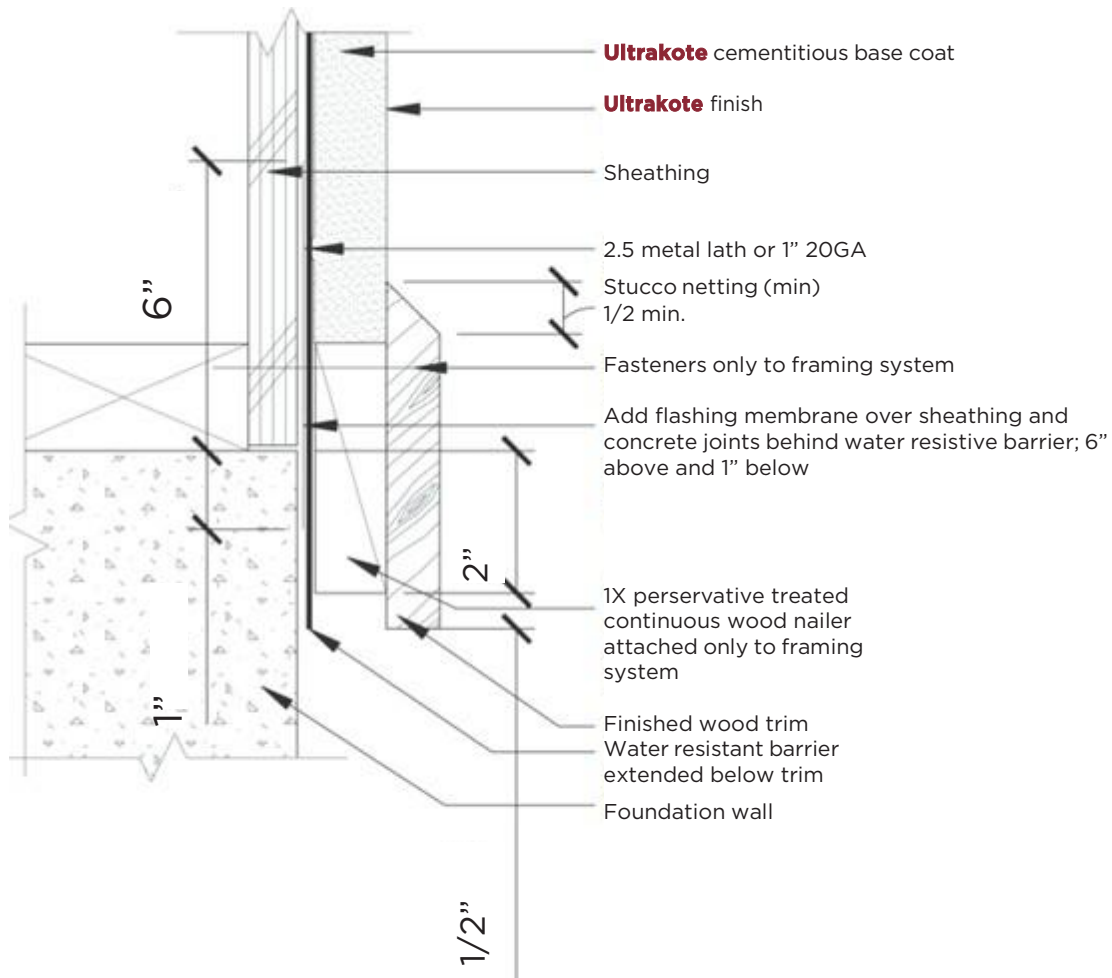
Typical Weep Scream at Concrete Foundation

HCS 2.2



Typical Wood Trim at Concrete Foundation

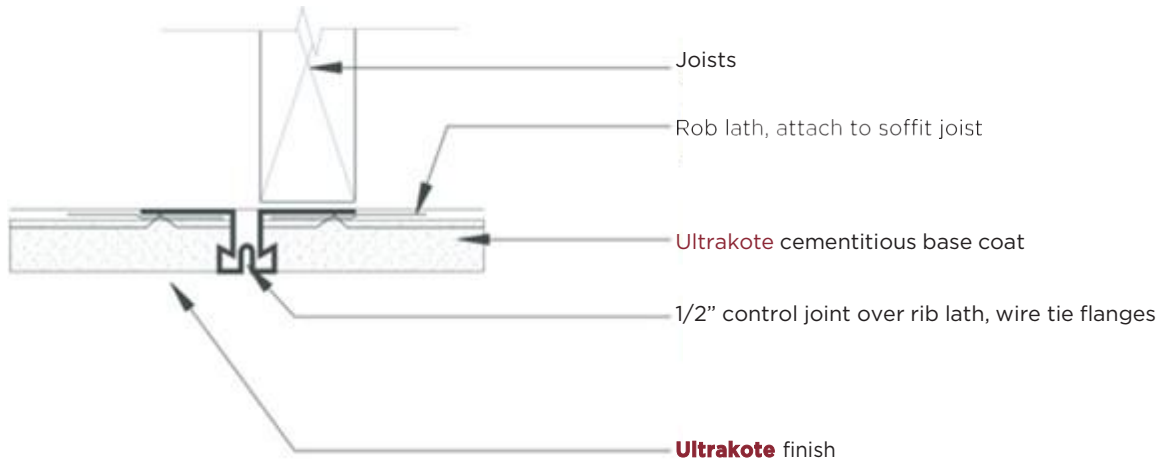
HCS 2.3



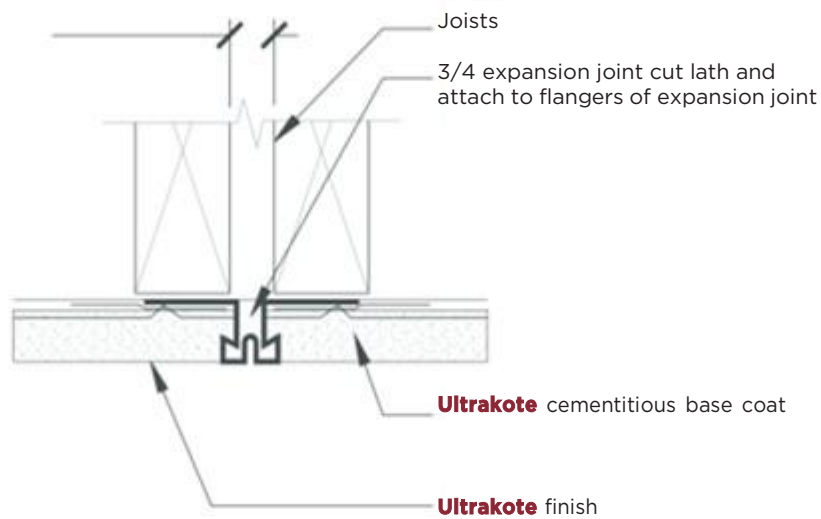
NOTE:
WATER RESISTANT BARRIER CONTINUES PAST JOINT LINE OF FOUNDATION AND FRAMING SYSTEM, PLUS APPROXIMATELY 3/8" BEYOND END OF WOOD NAILER

Typical Control and Expansion Joints

HCS 3.1



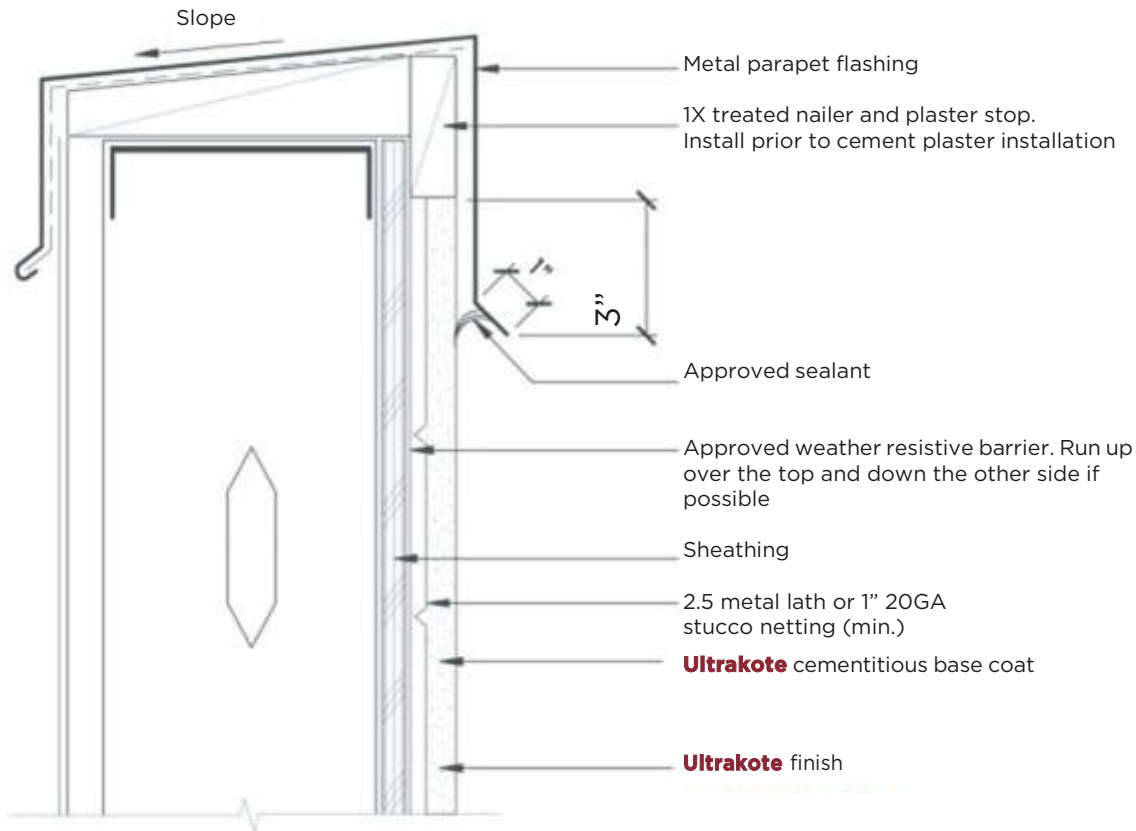
**Control Joint
1 - 1/2"**



Expansion Joint

Typical Metal Parapet Cap

HCS 3.2

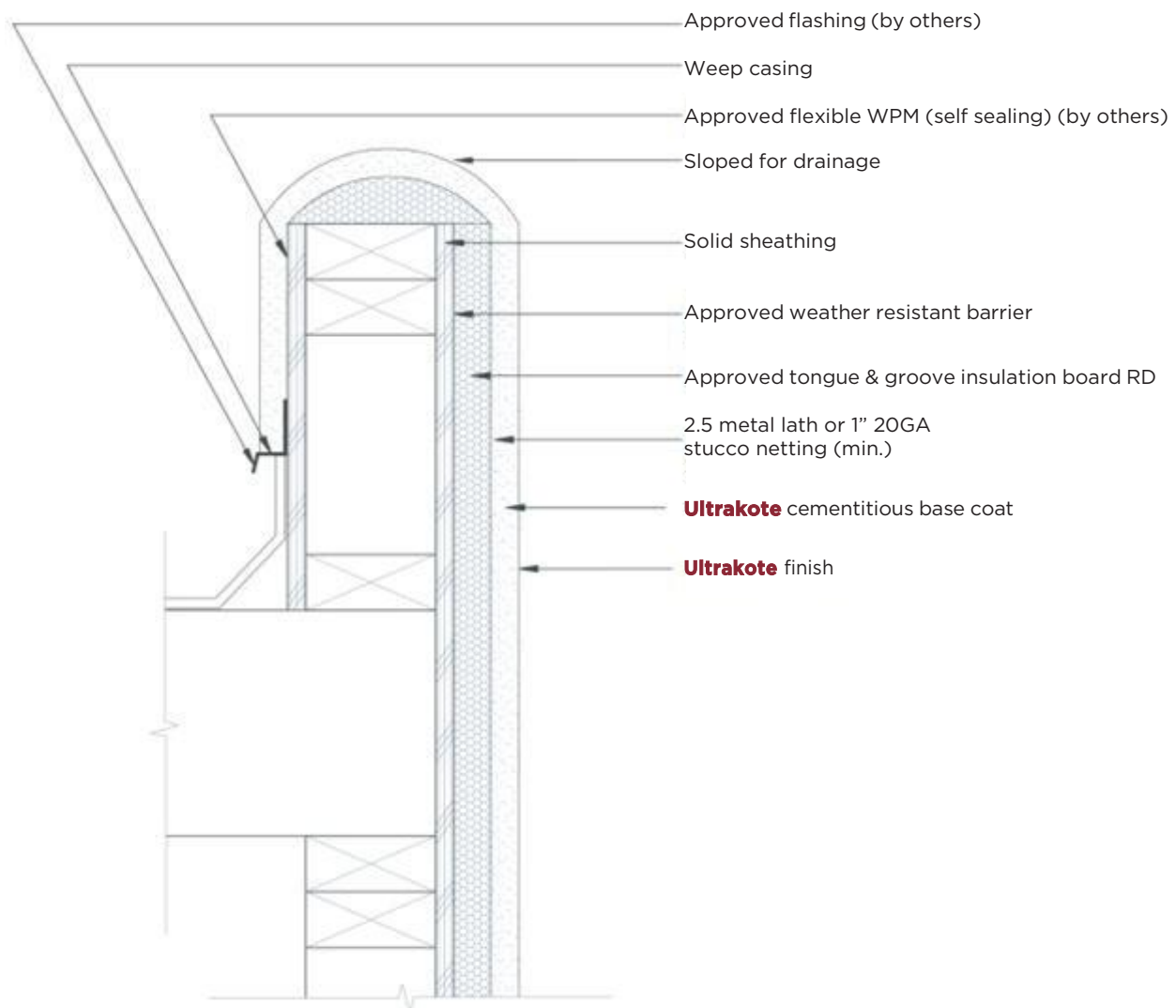


NOTE:
FOR ADDITIONAL PROTECTION, A SELF SEALING MEMBRANE SHALL BE ADDED OVER PARAPET FRAMING AND EXTENDED DOWN OVER THE WATER RESISTANT BARRIER.

NOTE:
FOR ADDITIONAL CAP FLASHING DETAILS REFER TO NRCA AND/OR SMACNA STANDARDS

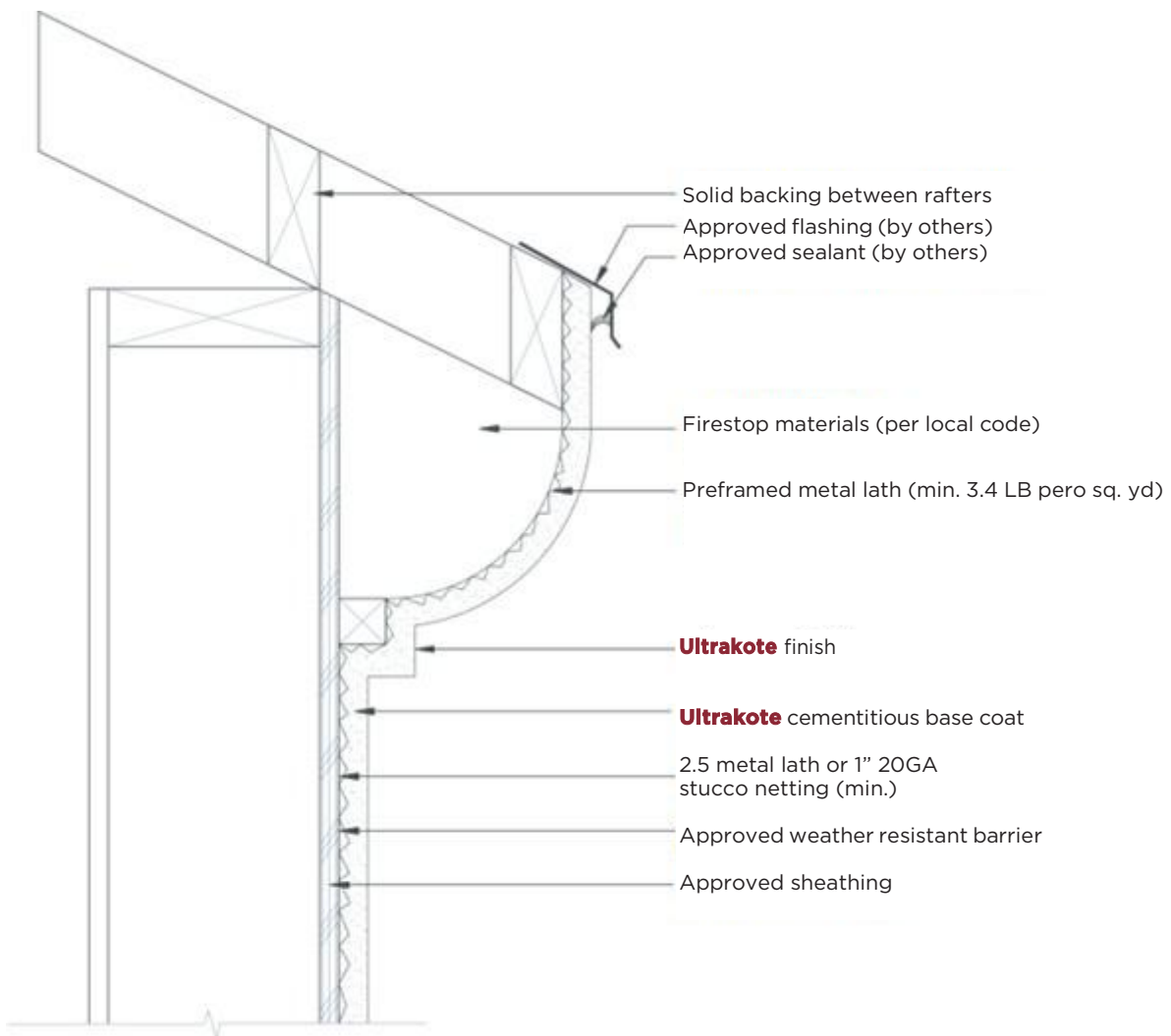
Typical EPS Foam Parapet Cap

HCS 3.3



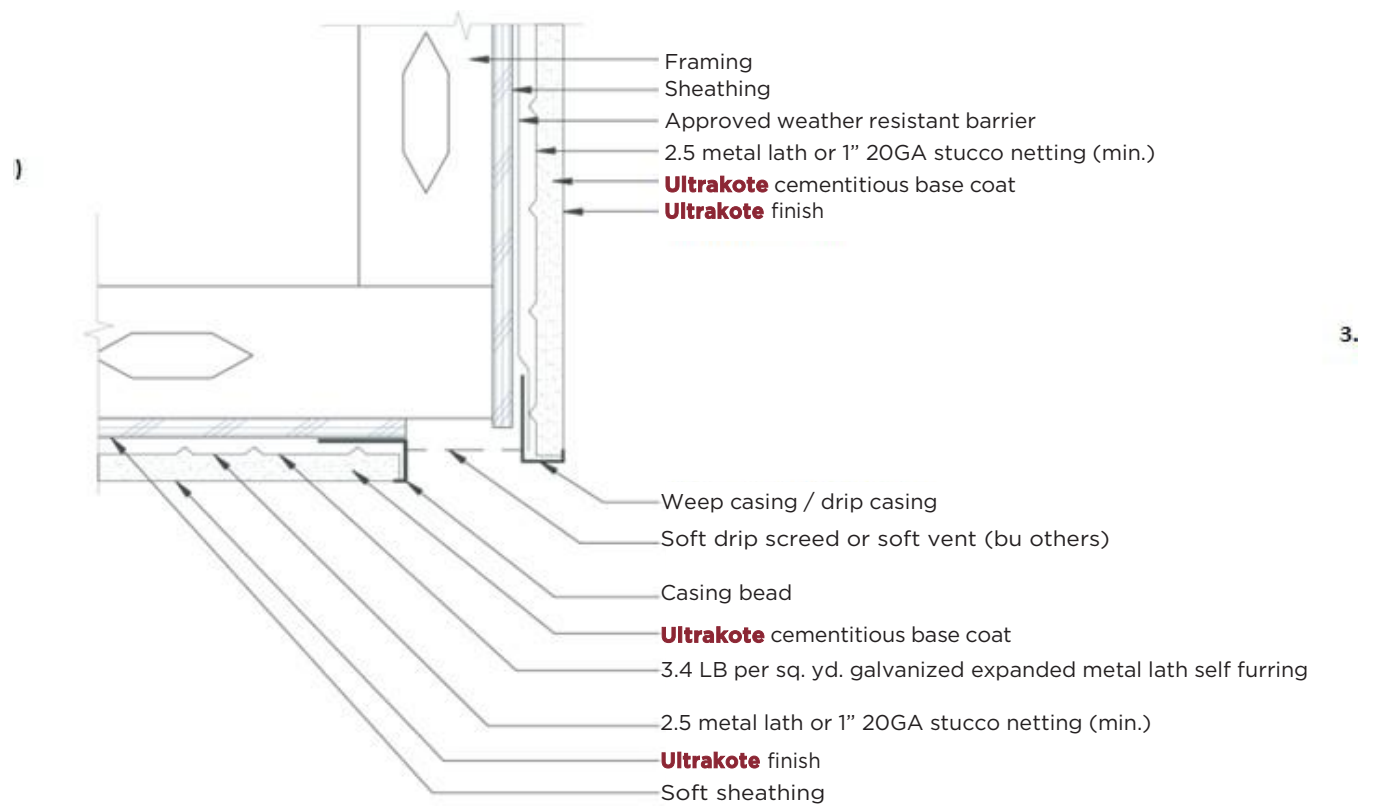
Typical Lath Basket Soffit

HCS 3.4



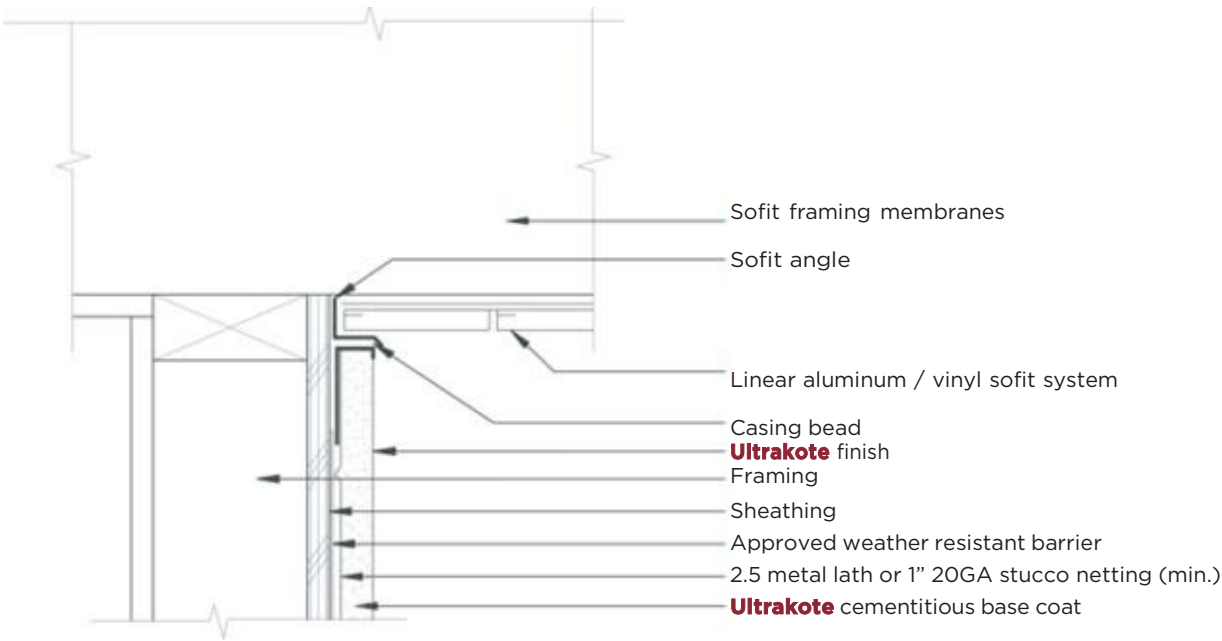
Typical Soffit Vent Screed

HCS 3.5



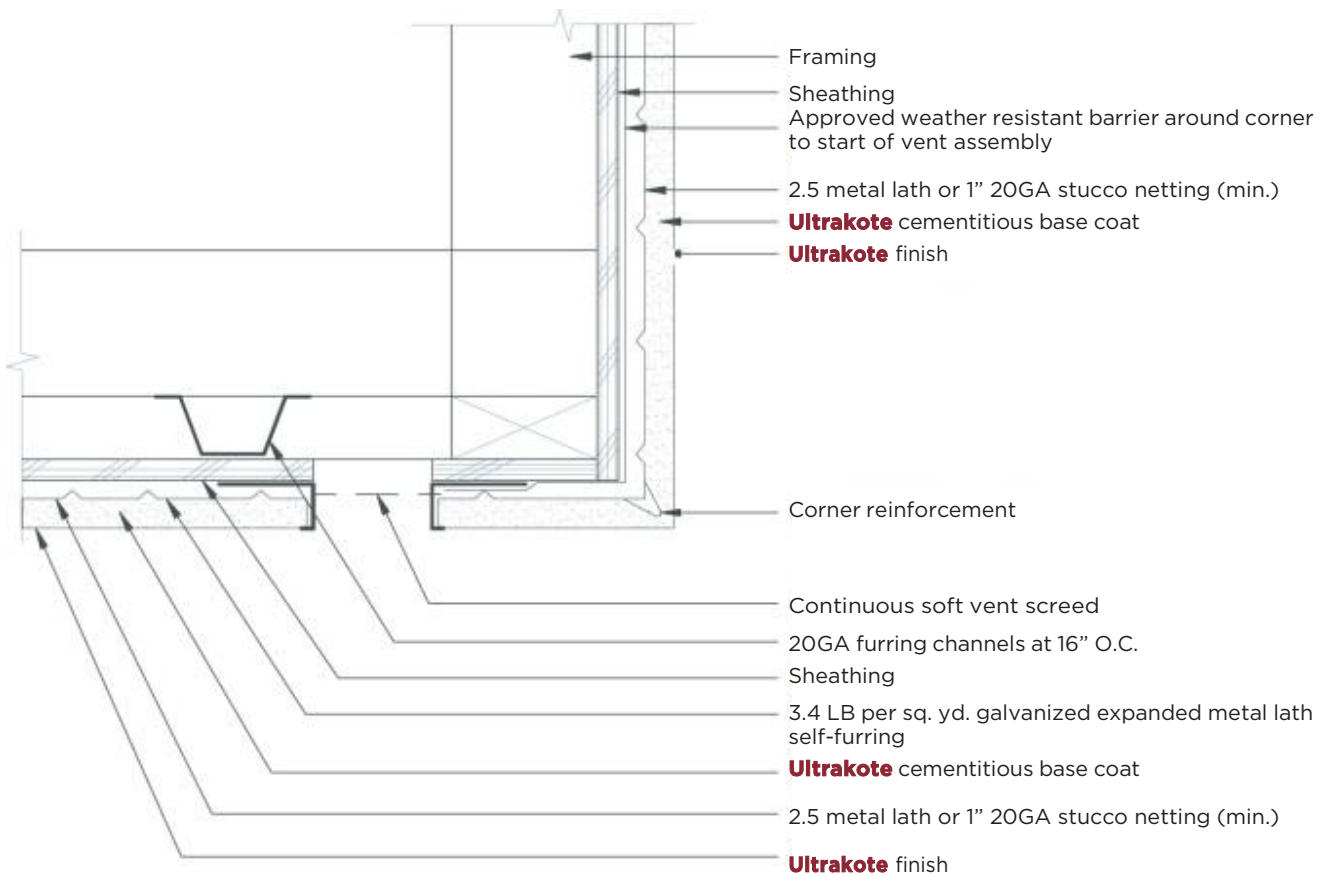
Typical Linear Soffit

HCS 3.6



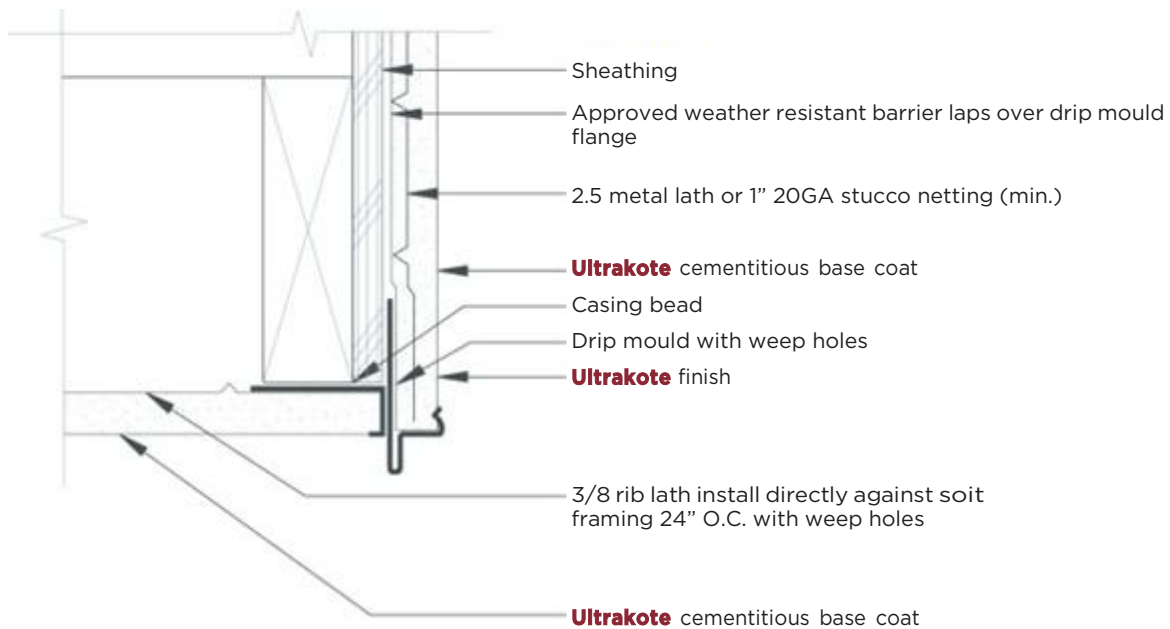
Typical Furred Soffit - Cont. Vent Screed

HCS 3.7



Typical Soffit Weep Screed

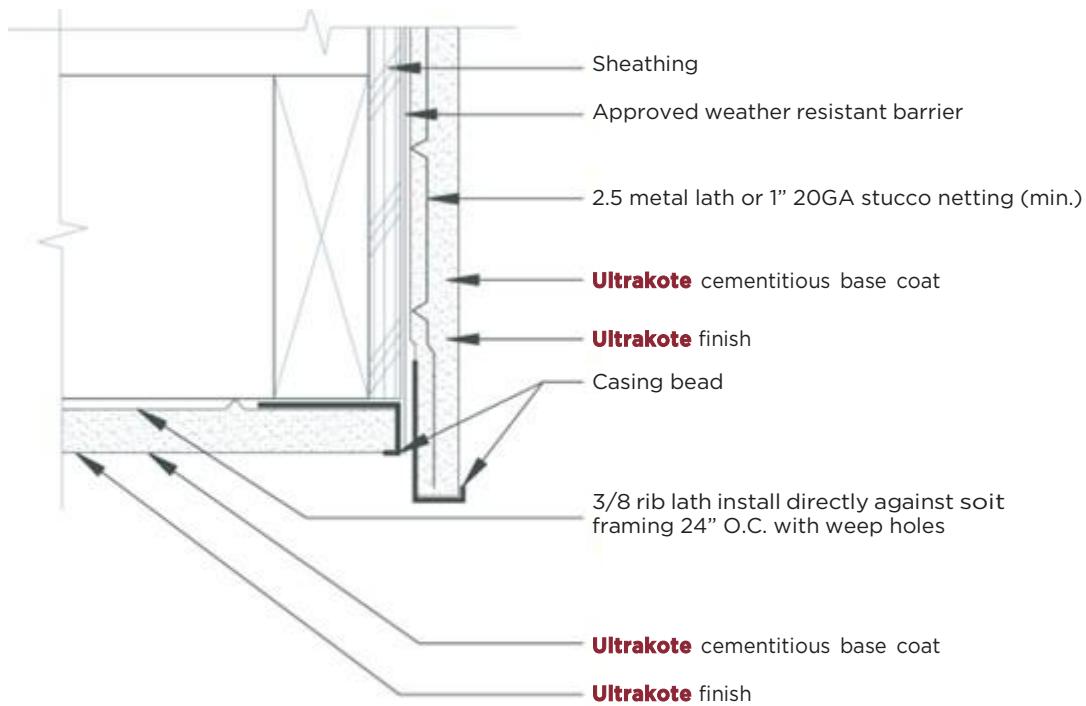
HCS 3.8



NOTE:
FRAMING JOINT SPACED AT 24" REQUIRES 3/8 RIB LATH
PERPENDICULAR TO JOINTS. LATH RIBS SHALL BE NESTED.

Typical Soffit Casing Termination

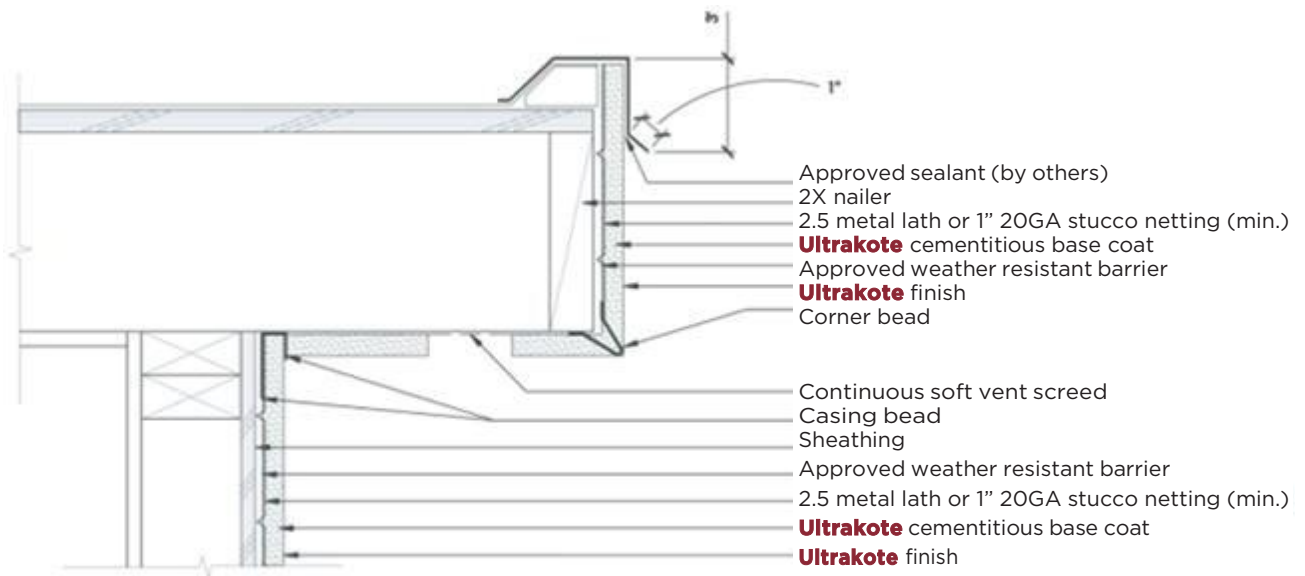
HCS 3.9



NOTE:
FRAMING JOINT SPACED AT 24" REQUIRES 3/8 RIB LATH
PERPENDICULAR TO JOINTS. LATH RIBS SHALL BE NESTED.

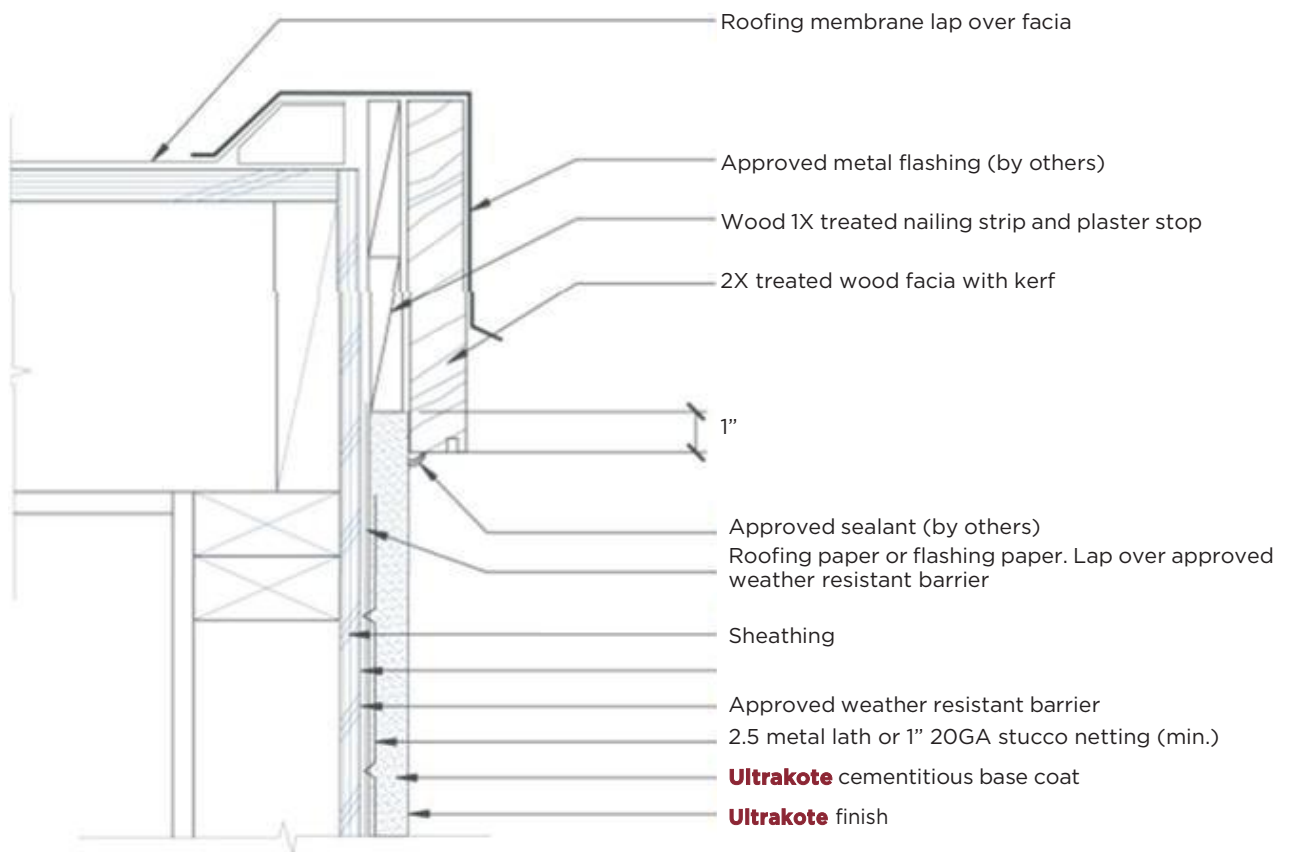
Typical Roof and Vented Soffit Termination

HCS 4.1



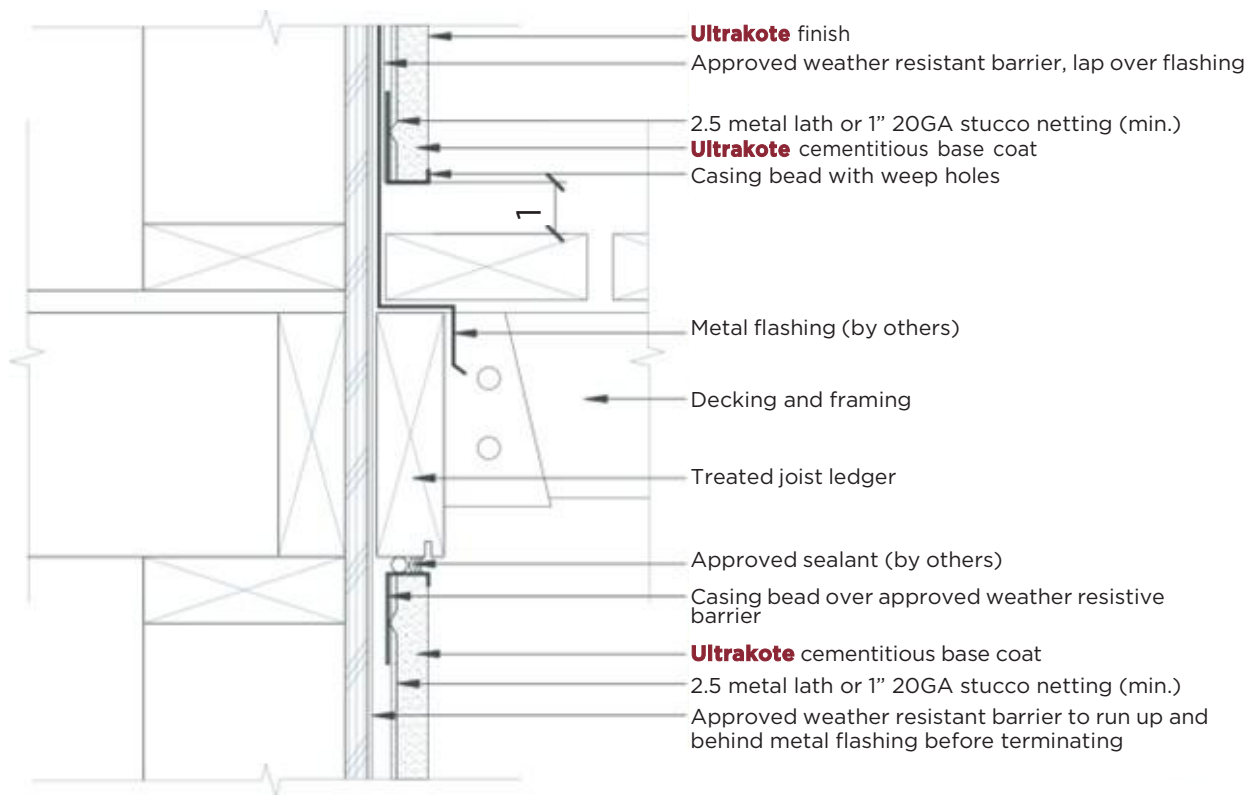
Typical Flat Roof Termination

HCS 4.2



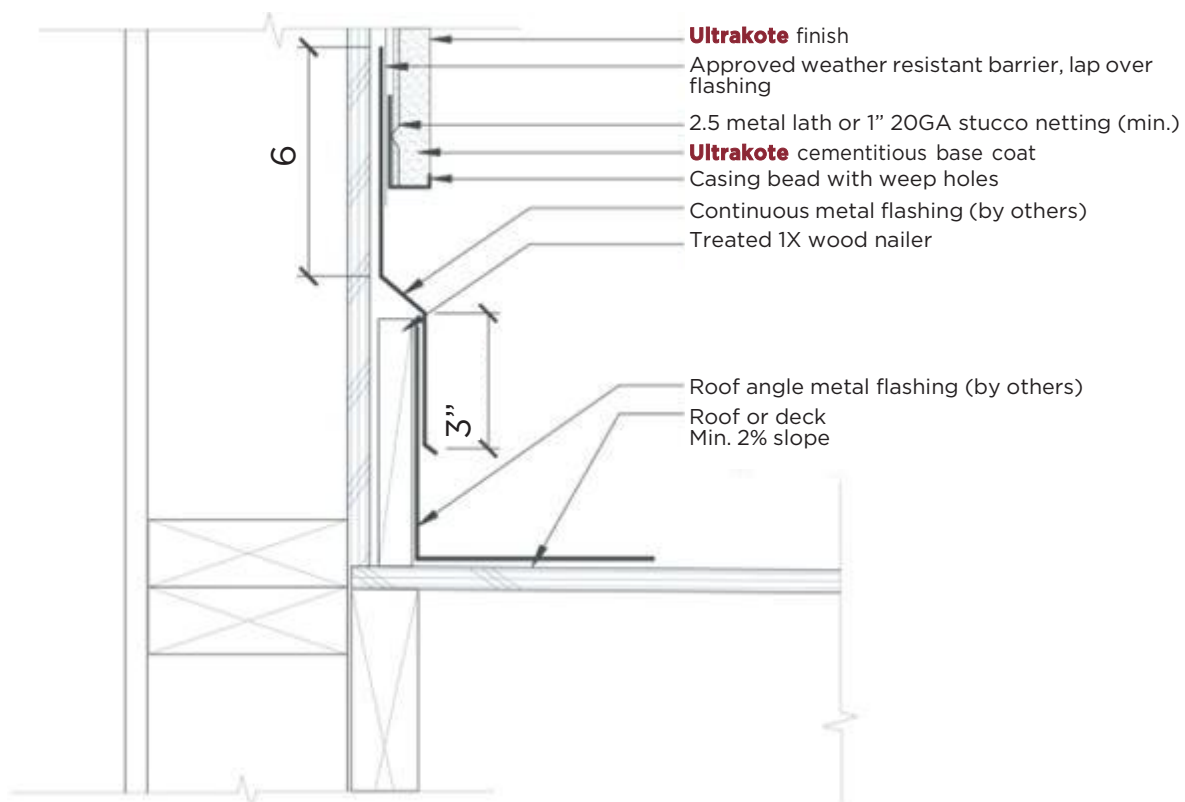
Typical Wood Deck Flashing

HCS 4.3



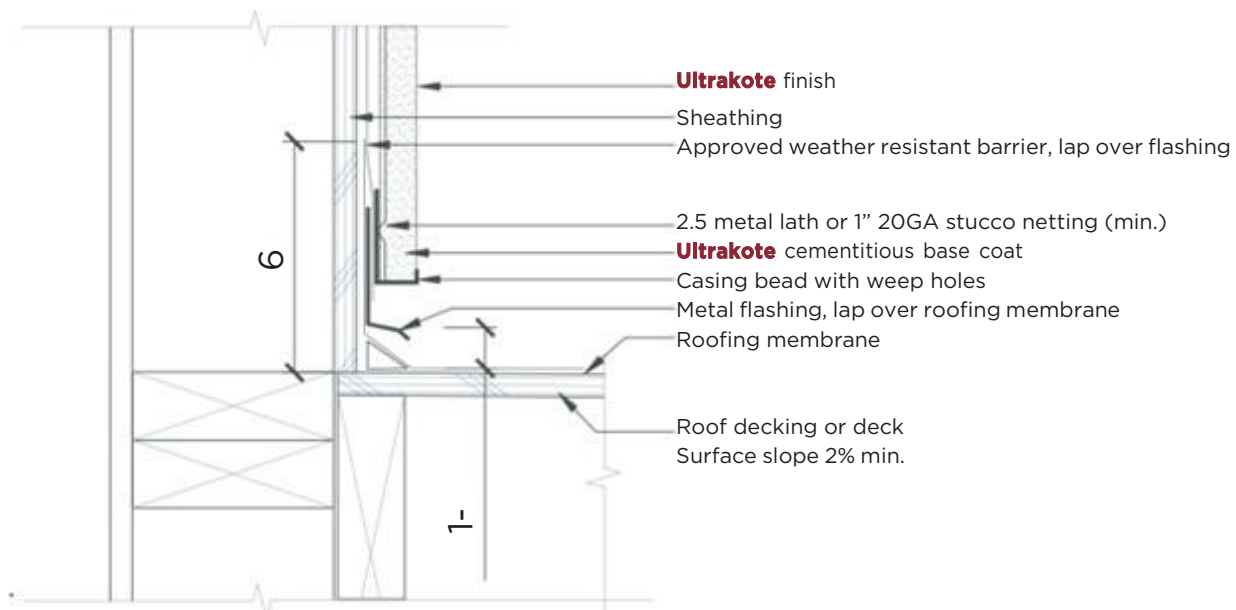
Typical Flashing at Roof and Deck Curb

HCS 4.4



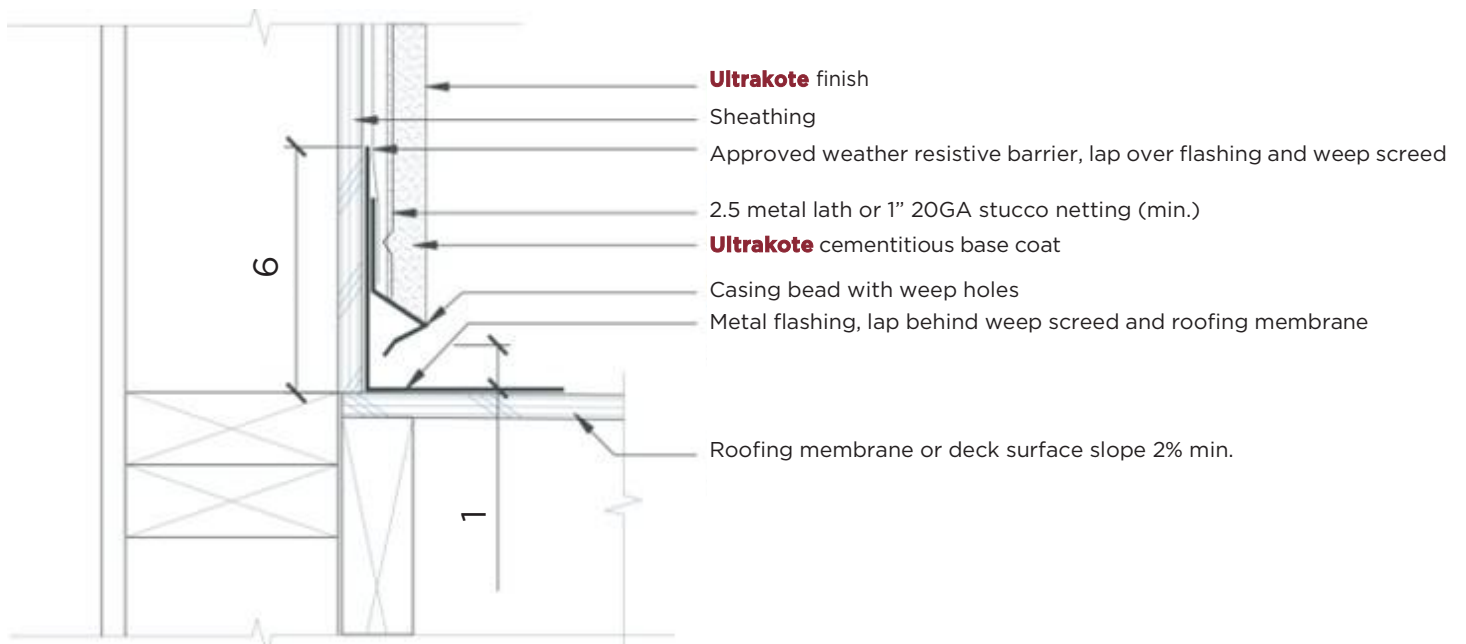
Typical Flashing at Roof and Deck Membrane

HCS 4.5



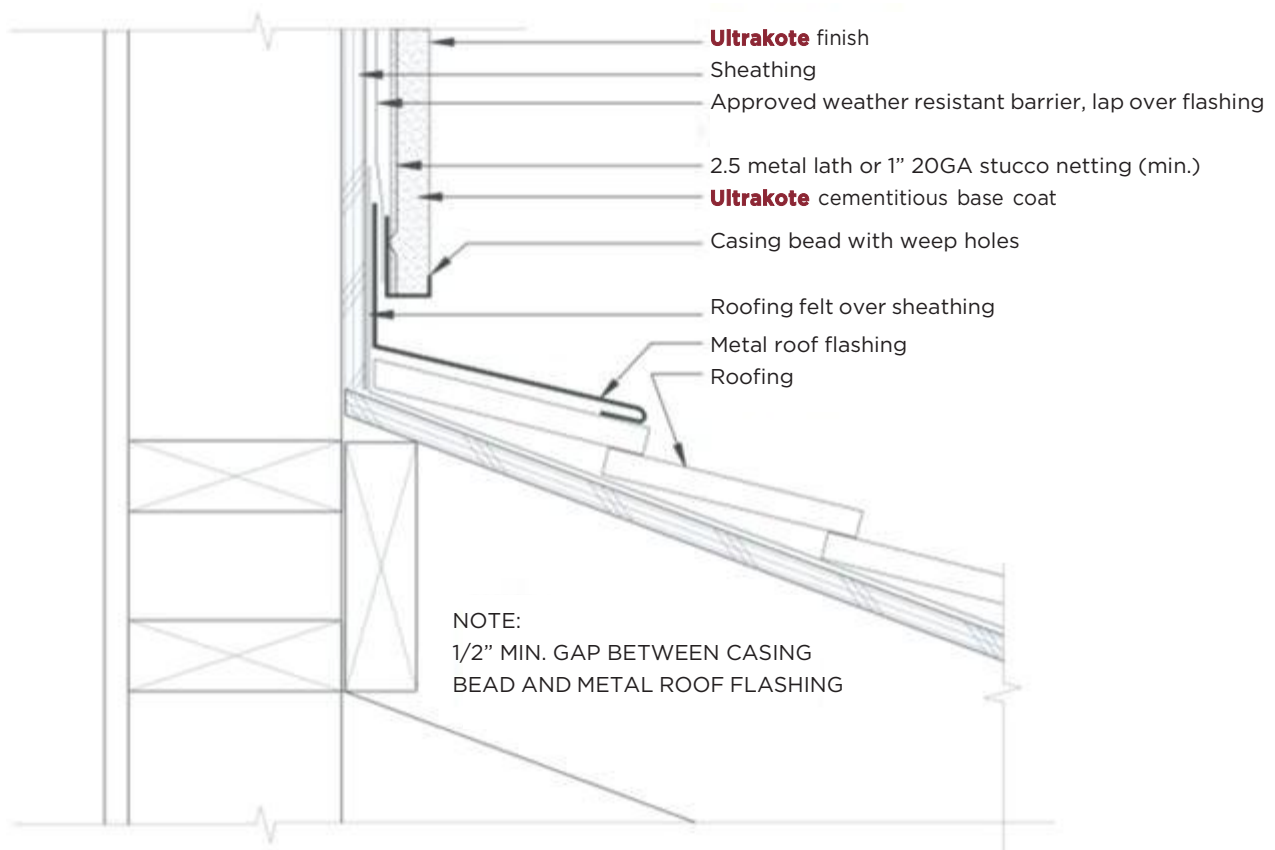
Typical Weep Screed at Roof and Deck Membrane

HCS 4.6



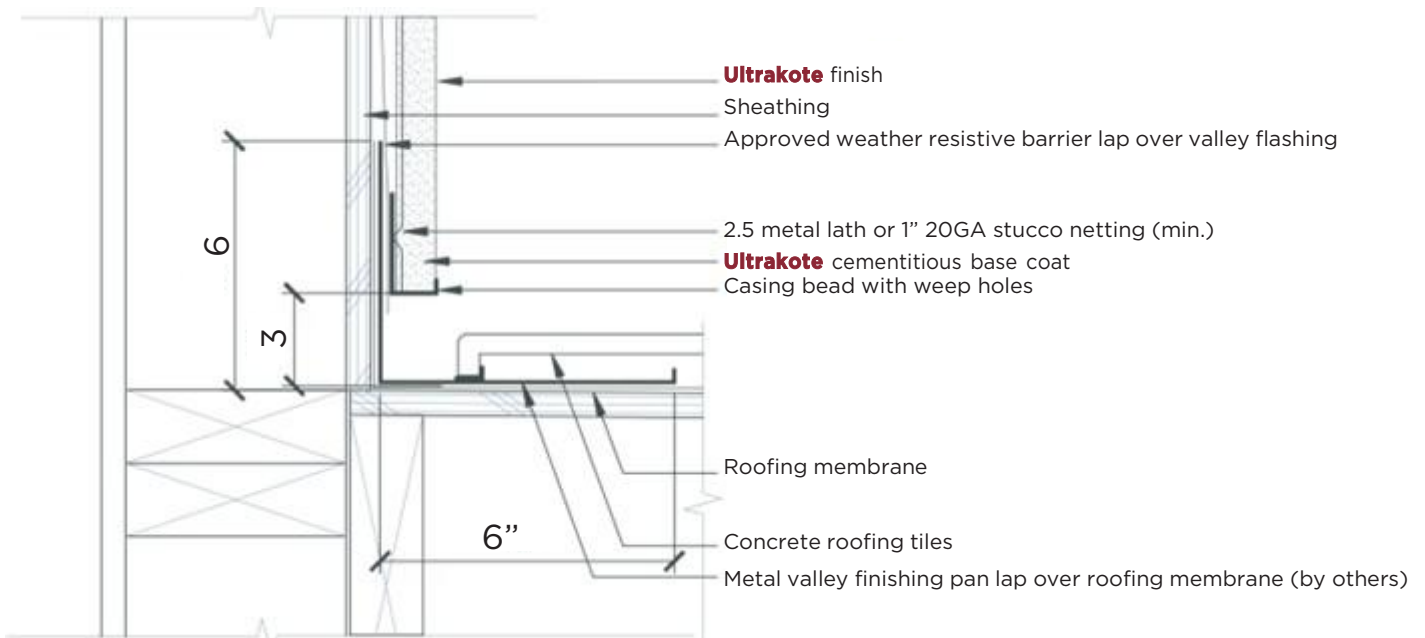
Typical Flashing at Roof Termination

HCS 4.7



Typical Flashing at Roof w/Concrete Roof Tile

HCS 4.8



Typical Reglet Termination to Roofing Membrane

HCS 4.9

